

CODESY MKII

maritime remote monitoring system



Base station

PINTSCH ABEN's CODESY MKII is a microprocessor controlled, remote operated monitoring and control system. The CODESY MKII system is designed specifically to monitor and control a number of solar powered, maritime light beacons and buoys.

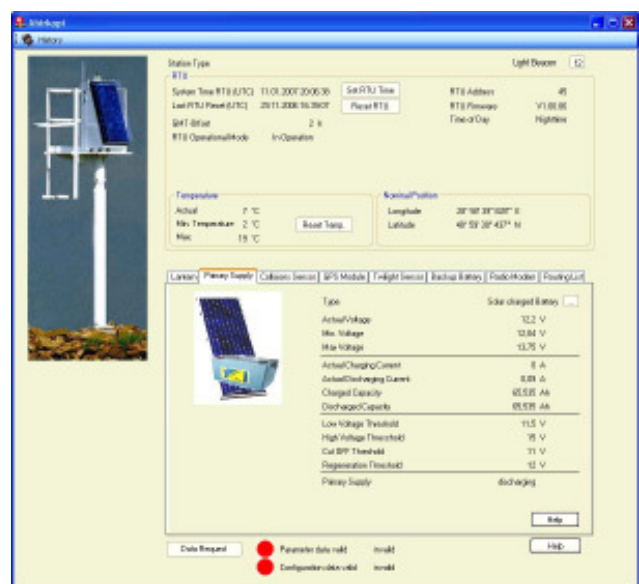
Part of the CODESY MKII system is the durable, shockproof and low energy consuming RTU electronic module. The blue RTU-unit, connected to an antenna, is installed inside each outstation (beacon or buoy) and at the base station. The base station communicates with the outstations over UHF, VHF or GSM. Optionally each outstation can be prepared with an acceleration and inclination sensor. The sensors enable the system to signalise collisions which will be reported to the base station and immediately an alarm is generated. A print-out of this alarm gives you full information about the beacons functionality at the moment of collision. CODESY MKII offers continuous access to actual and historical (measurement) data of all outstations.

CODESY MKII provides maximum functionality: among various other things, the system warns you when the last lamp is in operation, the battery voltage is getting too low or GPS positions leave the specified boundaries.

Using the extended controlling and monitoring software, you fully customise the screen visualisation for each monitored installation part to your own preferences

FEATURES:

- ☛ Guarding of collisions, inclination, availability and synchronisation of lamps, battery voltage, energy supply of solar panel, actual GPS position
- ☛ Remote adjustment of sensitivity twilight switch and battery temperature sensor
- ☛ Modular structured, standard components failsafe coupled using one-way mountable connectors
- ☛ Controlling software under Windows Server 2003 or Windows XP, wide possibilities to customize screen visualisations
- ☛ Data communication via UHF, VHF, GSM, telephone, INMARSAT-C satellite receiver and others
- ☛ Extreme low energy consumption in all operational modes
- ☛ Durable, shockproof construction



CODESY MKII visualisation of a light beacon

(codesy eng, 4-03-2008.hh)

©PINTSCH ABEN, Postbus 63, NL- 3600 AB Maarssen
E-mail: info@pintschaben.com Web: www.pintschaben.com
Tel.: +31 346 58 39 58 Fax: +31 346 55 43 93